

# County PL APL Camp

28<sup>th</sup> June - 30<sup>th</sup> June 2024

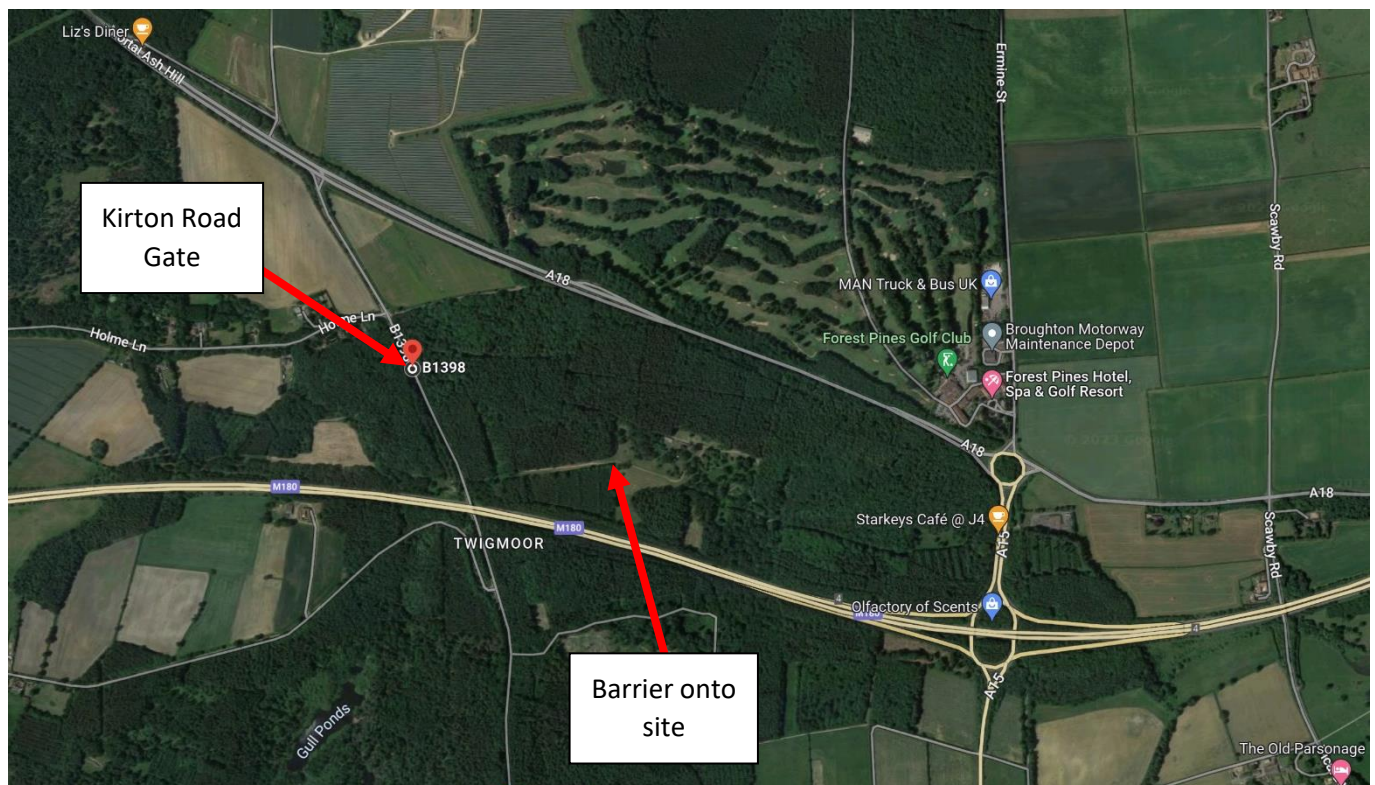
Primrose Hill



## Car Parking Plan

All traffic entering and leaving the site will be via the Kirton Road gate for this event.

The What3Words location for Kirton Road gate: [///biggest.opposite.princely](https://www.what3words.com/?q=biggest.opposite.princely)



Once you have come off the road, you will travel along a track through the trees for some distance, before coming to the barrier onto site.

As you come towards the barrier onto site at **7:30pm on Friday**, please pull up and park on either side of the track and then walk your young person through the barrier with their kit. You will see the check-in point as you enter site, where everyone must visit before putting up their tents.

Collection on **Sunday at 3:00pm** will be exactly the same and young people will need to check-out before they leave too.

*Please stay in your cars until the correct times for drop-off and collection.*